

DataBuild

Automation in Generating Account-Based Master Files

Every implementation of vendor software requires extensive, customized test files of master data – oftentimes account based. These are needed not only for an efficient implementation process, but also for correct testing of upgrades (e.g. for Visa/MasterCard compliance) and for regression testing, and for proper testing of fixes to problems that occur in production.

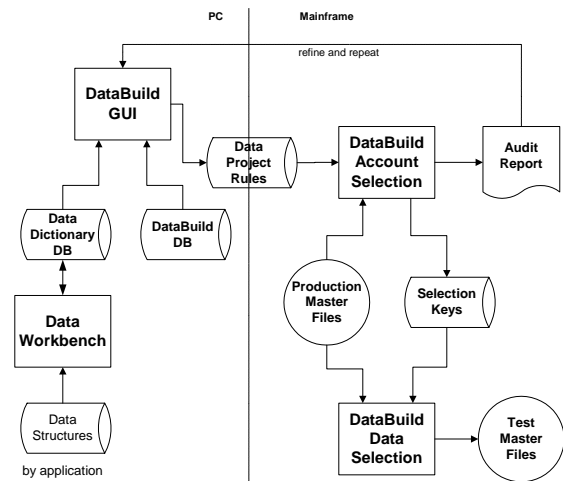
Different sets of test files are needed for specific purposes. It would be beneficial if

- One set is available to ensure all – installation-selected – variability of production data is covered
- All sets can be sized during creation of test master files (e.g. 10 accounts, 500 accounts, 30,000 accounts, etc.)
- Variability is assured, i.e. the multiple conditions present in a production environment are represented in the test data – based on user defined criteria
- Test data creation is independent of vendor specifications/file structures
- Test data – once created – can be aged for future regression testing
- Separate sets could be created, e.g. one set contains new test cases for tests of compliance releases
- All these sets could also be merged into one set.

The following options are available:

- Copy of production data. This approach usually results in very large test files, does not include ‘negative’ cases and is unavailable for start-up operations
- Manual creation of test data files/bases. This approach consumes large amounts of scarce development person-months and does not allow aging of data
- Test files only for individual cases. This approach produces limited results with limited effort
- **DataBuild.** This approach automates the process of master file test data creation to a very high degree, is quick, reliable and repeatable

DataBuild uses the following process:



Specifications performed on PC, extraction on mainframe.

Dramatically cuts time and effort:

- Automates test data creation up to 100% (manual effort is reduced to definition of some parameters)
- Frees IT staff for development work
- Creates consistent test files, e.g. based on production data, account master file matches customer file

End-user definitions for criteria:

- DataBuild repository allows the end user to define selection criteria in business language: “Account 90 days delinquent” rather than “XXXXXX-Field = ‘1’”
- Criteria combinations verified in report

Flexible sizing and variability:

- Test data size is specified as total number of one criterion (usually accounts)
- Variability of selected criteria combinations is proportional to their occurrence in production data
- Minimum and maximum number of cases to be selected can be specified for each criteria combination – overriding proportional allotment rules

Illustrated with the following example: Let's assume that the customer wants to

- build a test master data set with 500 accounts
 - extract at least 5 occurrences of any combination (or as many as there are in the production master data sets)
 - use just 2 selection criteria: block code and status
 - select only block codes that are 'space' or 'fraud'
- and that the proportions in the production master data sets are

Block Code	Status	No. Accts in Production	Proportion %	Proportion % Selected ¹	No. Accounts Selected
Spaces	Active	444,503	44.45	61.18	306
	Inactive	61,465	6.15	8.46	43
	Closed	28,800	2.88	3.96	20
	Dormant	30,493	3.05	4.20	21
	Other	76,205	7.62	10.49	53
Fraud	Active	27,442	2.74	3.78	19
	Inactive	11,199	1.12	1.54	8
	Closed	33,204	3.32	4.57	23
	Dormant	3	0.00	0.00	3 ²
	Other	13,198	1.32	1.82	10
Other	Other	273,488	27.35	N/A	
Total		1,000,000	100.00	100.00	506 ³

Configuration:

- Intel Pentium >300 MHz recommended
- Windows 98/NT/2000/XP
- Editor (e.g. Wordpad)
- Mainframe MVS

Support:

- DataBuild is easy to use and comes fully and extensively documented.
- Two-day training classes are available from ALDOMEG upon request. Upon prior arrangement training can be performed via videoconferencing.
- Service to create an initial set of test data turn-key by ALDOMEG is available upon request.
- Maintenance agreement is available for selected software vendor's products.
- Warranty: 30 days after delivery

Ordering Information:

Email: sales@aldomeg.com
 Fax: ++1-407-897-5346
 Shipment on CD-ROM
 Delivery by courier available

About ALDOMEG:

ALDOMEG has offices in Orlando, FL and representatives in Australia and Brazil. ALDOMEG is well recognized for a series of tools of use in the credit card and payment systems industry.

For more information, call ALDOMEG at the number below or visit the ALDOMEG website at www.aldomeg.com.

ALDOMEG, Inc.



2102 E. Robinson Avenue
 Orlando, FL 32803
 Phone: ++1-888-822-5470
 Fax: 407-897-5346

¹ Production records that do not correspond to block code 'spaces' or 'fraud' are ignored for this selection – the respective percentages are recalculated

² Note that 3 records (all that are in production) are selected, although the proportional value is 0 (but the minimum is set at 5 occurrences – only 3 are available)

³ Due to minimum number of records and upwards rounding, the actual number selected is slightly greater than the desired 500 records